



Palau de Congressos
Palma • Mallorca



DOSSIER TÈCNIC 2010

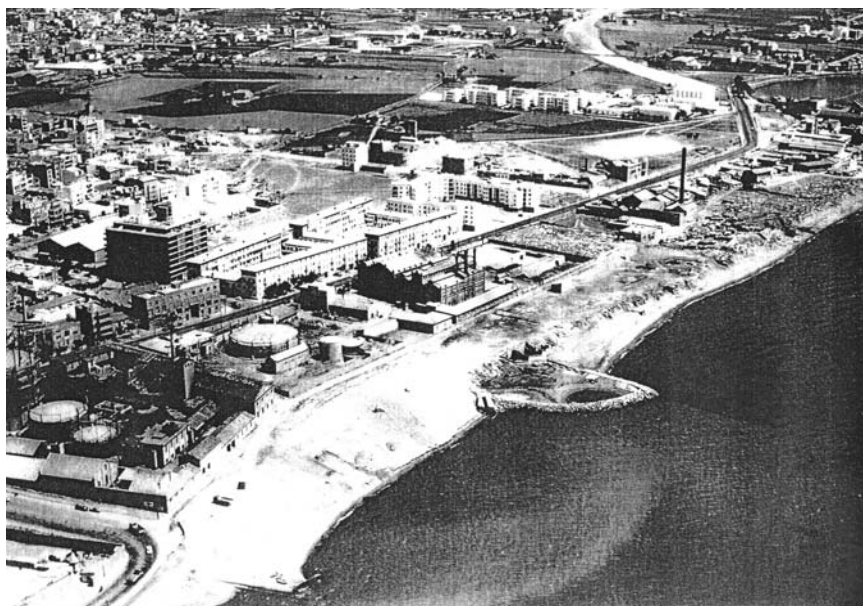
SECTOR DE LLEVANT. MOLINAR I PORTITXOL



Any 1922



Any 1947



Any 1963



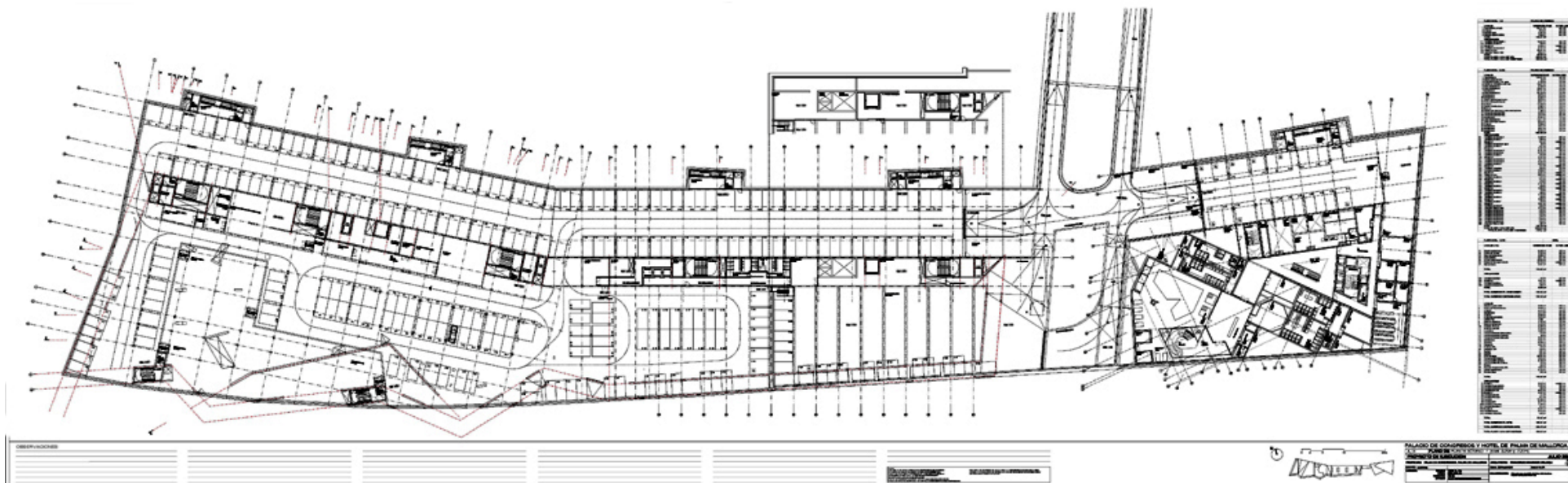
Any 2001

FAÇANA MARITIMA. Any 2007



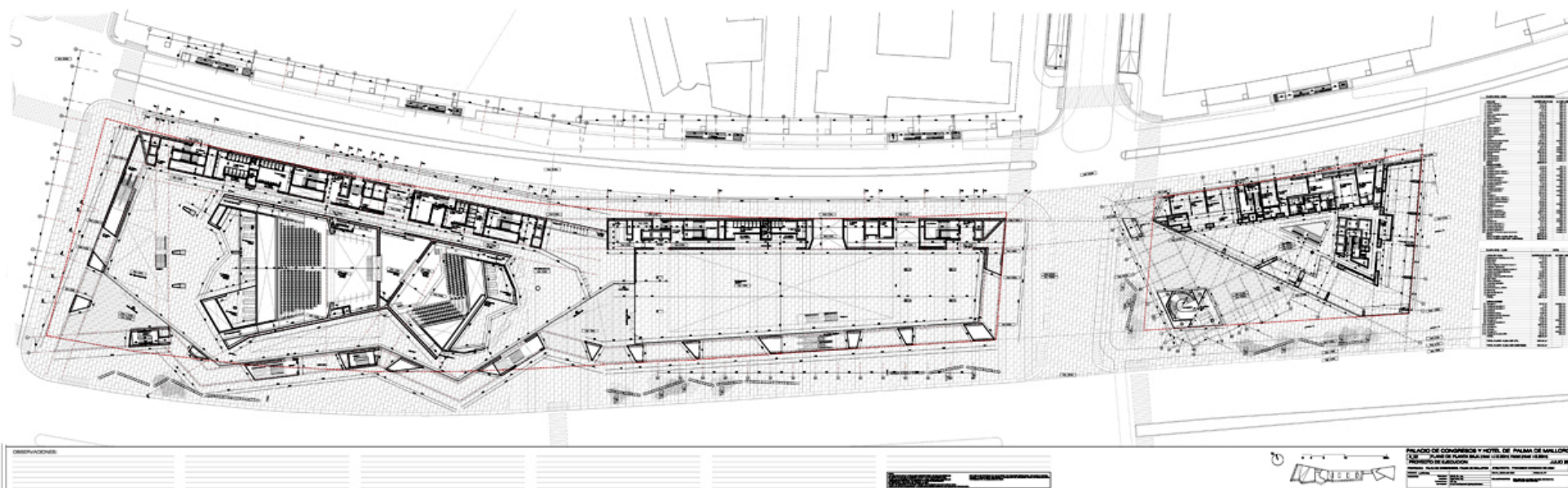
PLANTA SOTERRANI

Sup. Construïda: 17.961,16 m2. 13.874,58 m2. / Palau + 4.086 m2. / Hotel



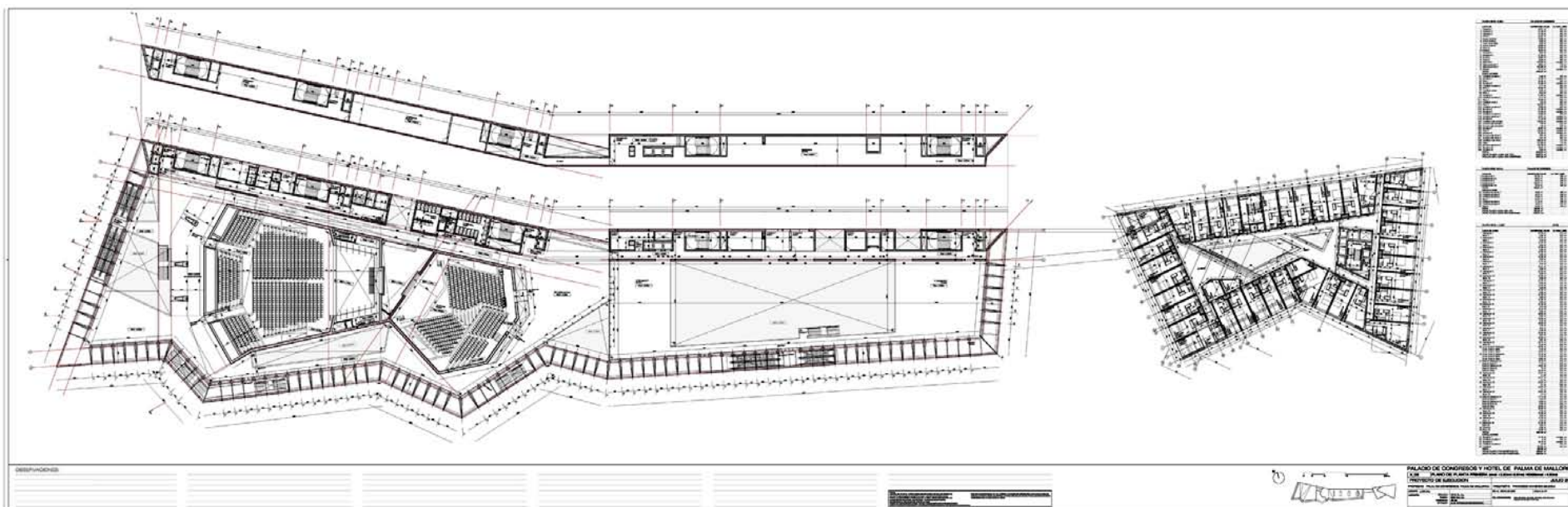
PLANTA BAIXA

Sup. Construïda: 8.039 m2. 6.508,08 m2. / Palau + 1.531,03 m2. / Hotel



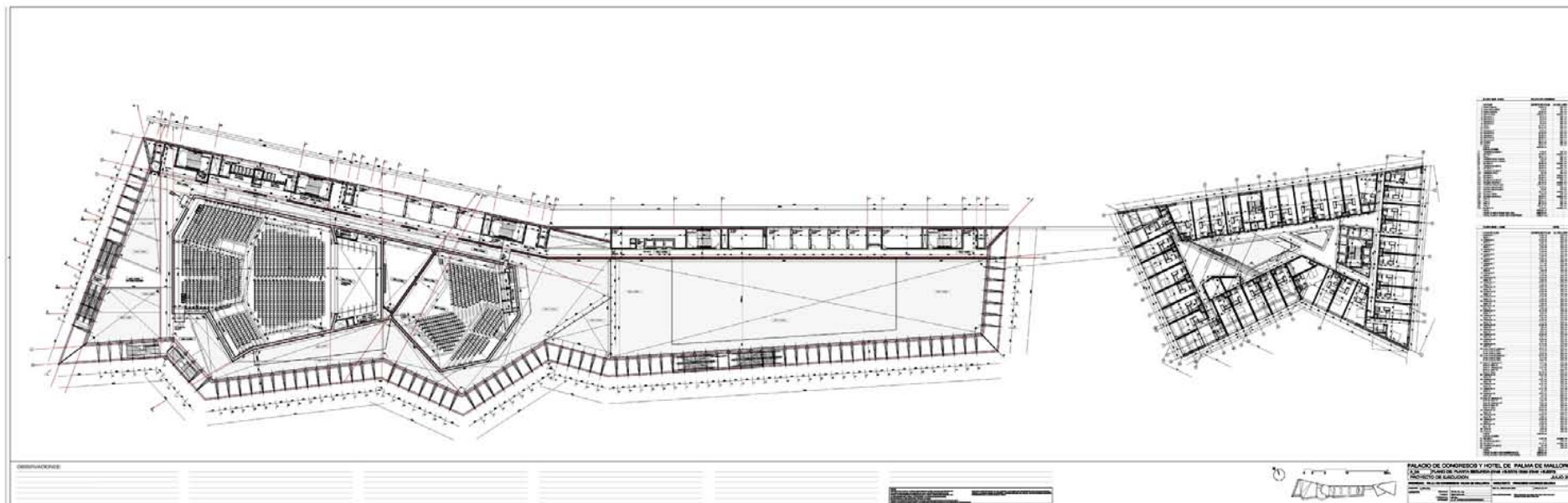
PLANTA 1ª

Sup. Construida: 6.733,04 m2. 4.707,35 m2. / Palau + 2.025,69 m2. / 44 habitaciones Hotel



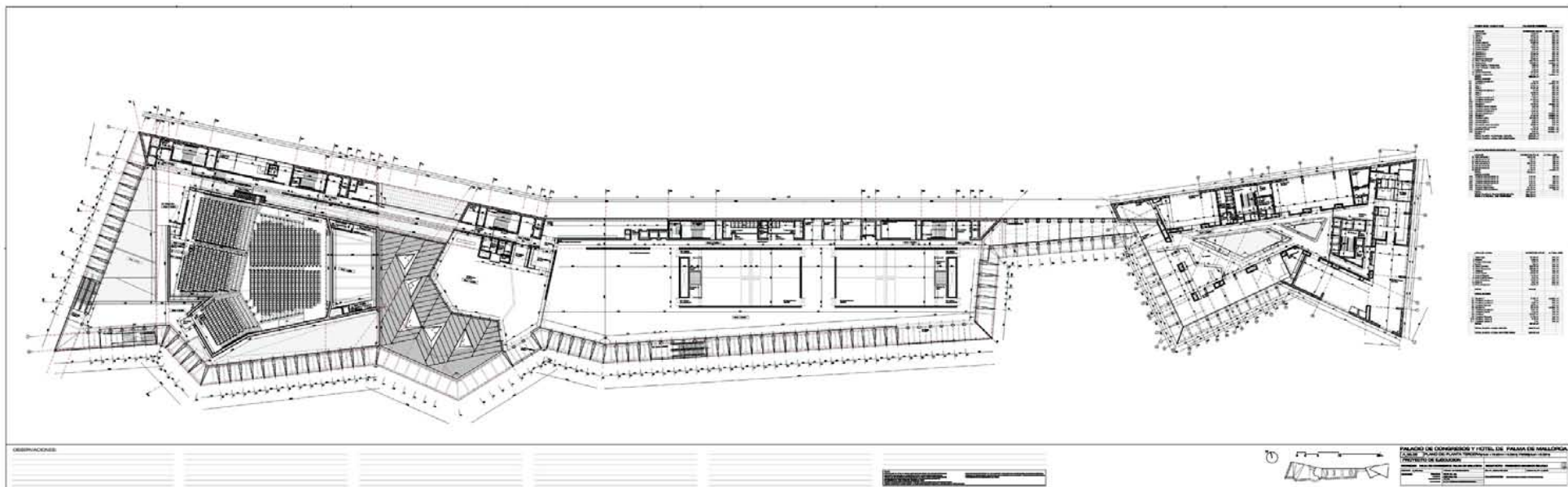
PLANTA 2ª

Sup. Construida: 3.360,39 m2. 1.335,47 m2. / Palau + 2.024,92 m2. / 44 habitaciones Hotel



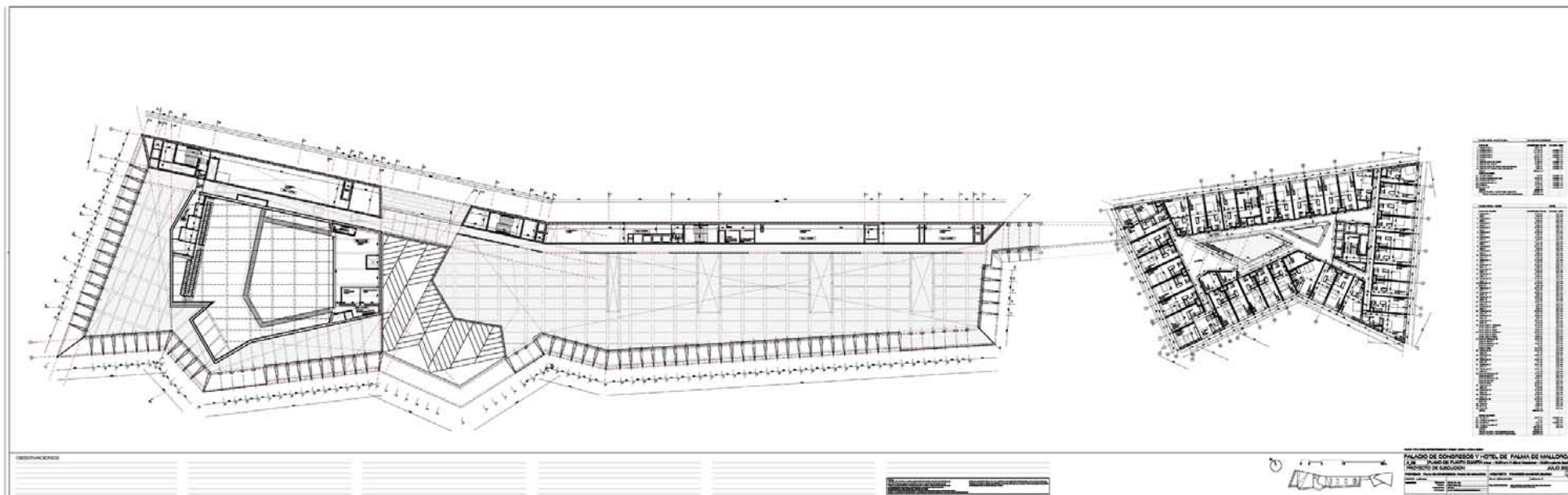
PLANTA 3ª

Sup. Construida: 5.029,96 m2. 3.188,07 m2. / Palau + 1.841,89 m2. / menjador Hotel

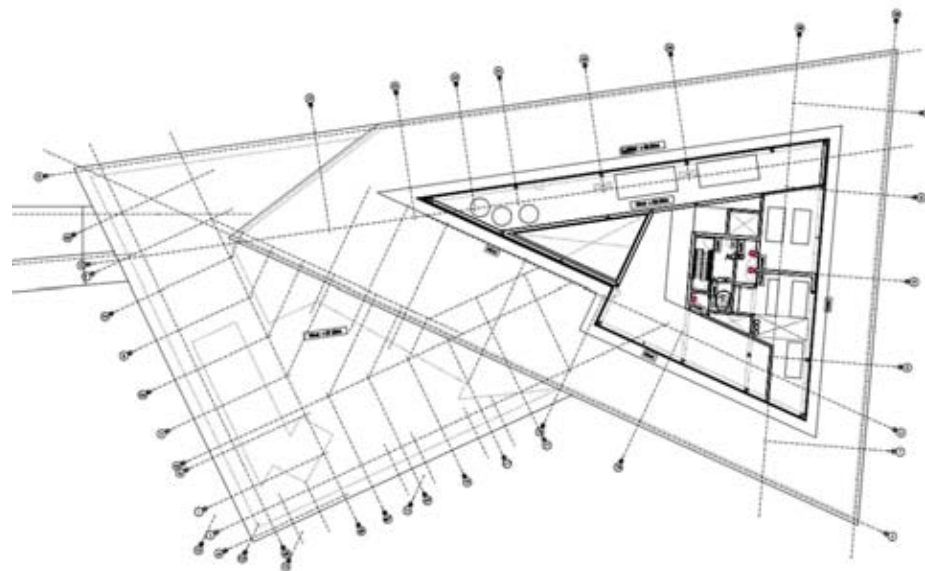


PLANTA 4ª

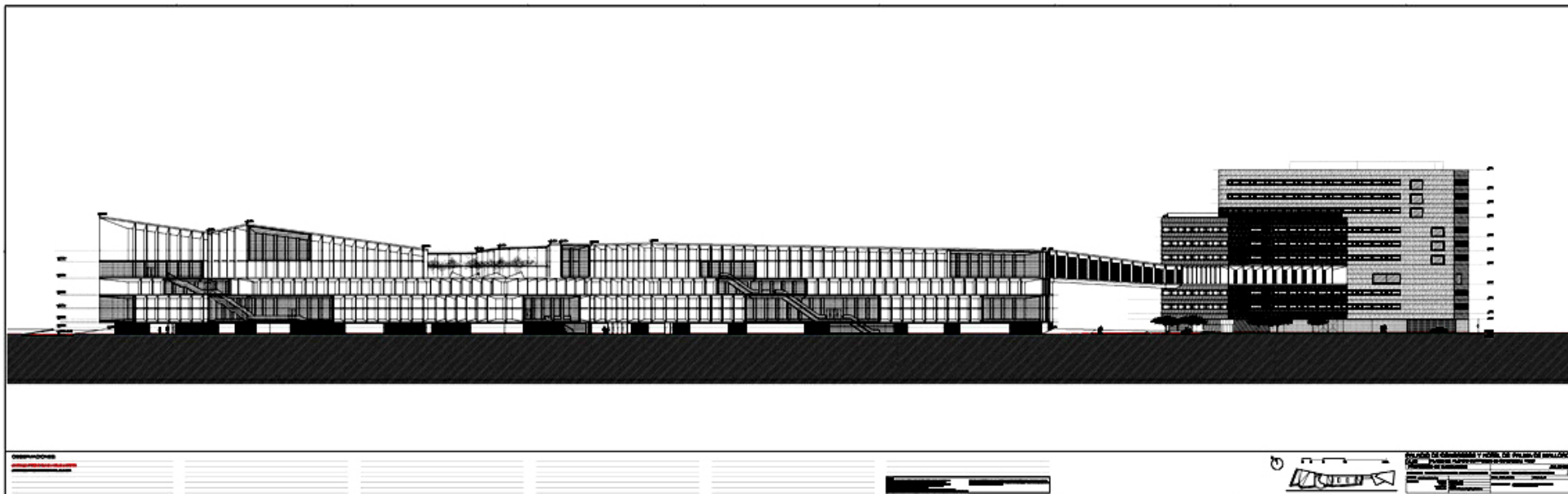
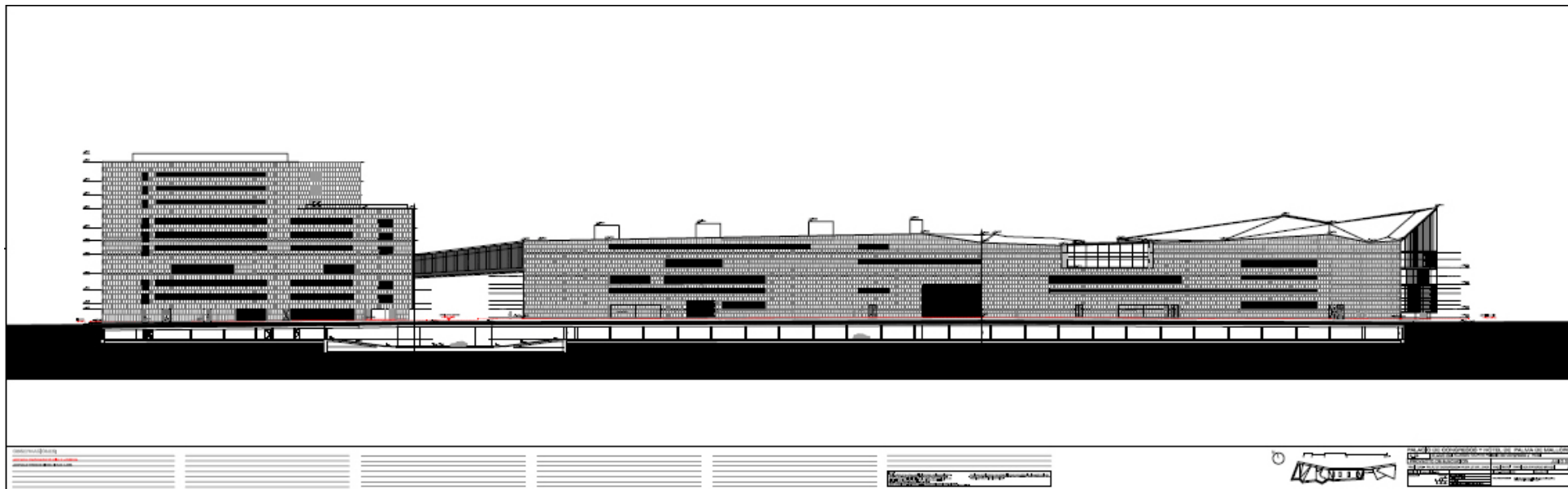
Sup. Construida: 7.596,00 m2. 5.562,28 m2. / Palau + 2.033,72 m2. / 44 habitacions Hotel



PLANTA 5ª/6ª. HOTEL 2.033,54 m2. / 44 habitacions Hotel./plantal **PLANTA 7ª. HOTEL** 1.395 m2./ 29 habitacions i piscina Hotel
PLANTA 8ª. HOTEL 1.392,61 m2./ 30 habitacions Hotel **PLANTA 9ª. HOTEL** 1.391,64 m2./ 30 habitacions Hotel



FAÇANES NORD I SUD



INFOGRAFIA. FAÇANA SUD

Materials: Alumini, vidre i pedra natural en coberta



INFOGRAFIA. FAÇANA NORT

Materials: Pedra natural en coberta i carpinteries d'alumini



AUDITORIUM PRINCIPAL "ILLA DE MALLORCA"

Sup. Util: 1.618 m2. / 2010 butaques subdivisible en 3 sales



AUDITORIUM MENOR "CIUTAT DE PALMA"

Sup. Util: 475 m2. / 462 butaques



SALES D'EXPOSICIONS I VESTIBULS

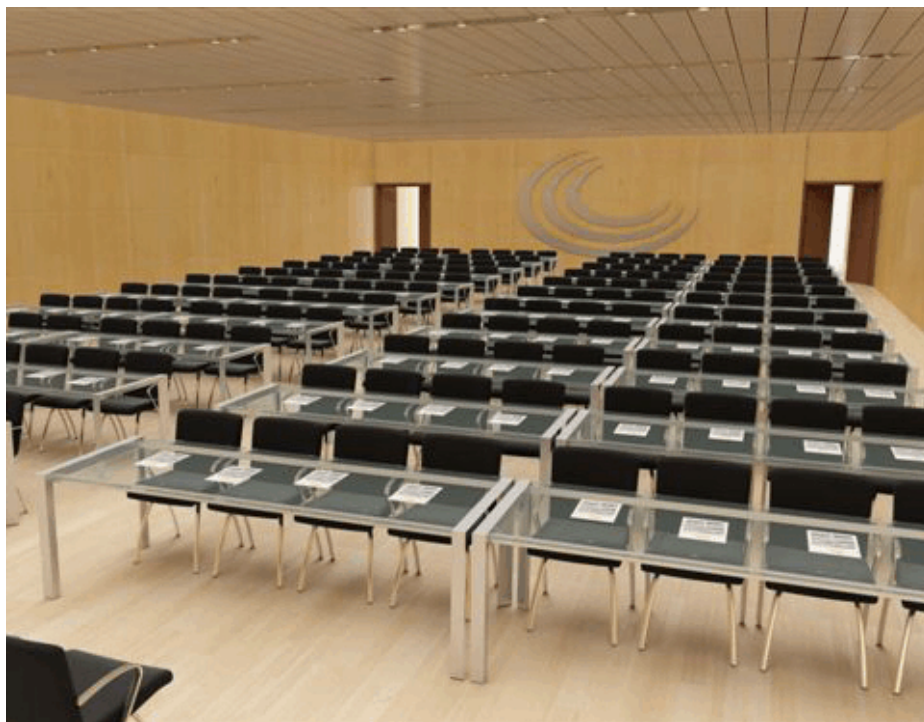
Sup. Util: 2.366 M2. / 2.375 M2.



Sala Principal: 1.665 m2. Sala Menor: 701 m2.

SALES DE REUNIONS I VESTIBULS. SALES "MEDITERRANI"

Sup. Util: 1.412 M2. 2 SALES / 751,14 M2. SUBDIVISIBLES EN 8 i 4 SALES / 284 M2. SUBDIVISIBLES EN 8



RESTAURANT I MIRADOR

Sup. Util: 478 m2. | 620 m2.



HOTEL

Sup. Construida: 17.704 m2. / 268 habitacions / 242 dobles + 13 junior suite + 13 suites

